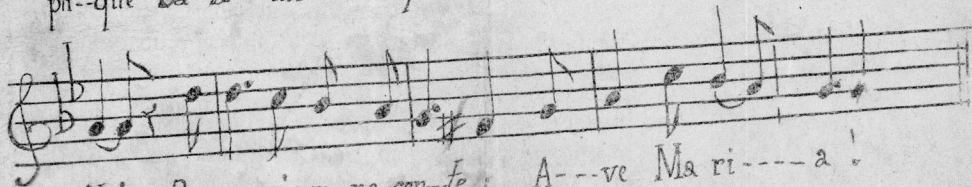




Ja-dis en Ar-mo-ri-que, non loin de Les-ne-ven, Vi-rait pauvre sin

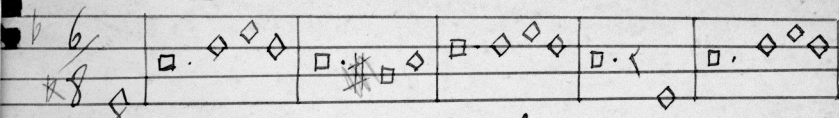


pli-que Sa-la-ün l'or-phe-lin. E-cou-tez com-mèl chante Ah!

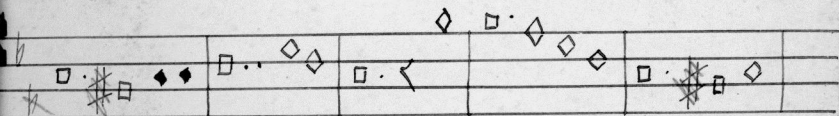


Ah! De sa voix in-no-cen-te: A-ve Ma ri-a!

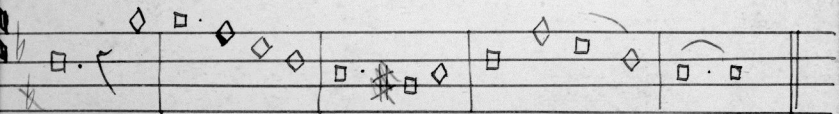
Ar person. ato sikourct eant *Kerisac-Kerzuel*.



Ja-dis en Armo-ri-que non loin de Les-ne-ven Vi-rait pauvre sin



pli-que Sa-la-ün l'or-phe-lin. E-cou-tez, com-mèl chan-te ah!



ah! De sa voix in-no-cen-te A-ve Ma-ri-a